



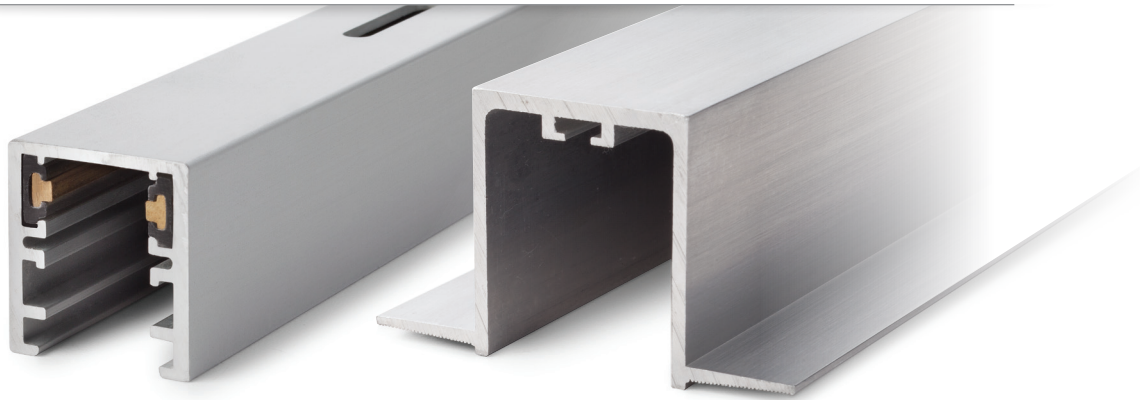
# Recessed Track

**Translite** Low Voltage Track System

**PHILIPS**  
**LIGHTOLIER**

# Recessed Track

## Translite Low Voltage Track System



**RT4-505C/RT8-505C**  
Inner Conductor Housing

**RT4-505H/RT8-505H**  
Outer Housing

### Features

- Discreet flangeless design
- Minimal 1 1/8" width
- Available in 4' and 8' sections
- Compatible with most Translite low voltage and LED fixtures
- Flush Transjack system connector for easy fixture installation
- Field paintable snap-in cover for a finished appearance

### Track Housings

Catalog Number	Description	Finish
<b>RT4-505C-AL</b>	4' Inner Conductor Housing	Satin Aluminum
<b>RT8-505C-AL</b>	8' Inner Conductor Housing	Satin Aluminum
<b>RT4-505H-AL</b>	4' Outer Housing	Satin Aluminum
<b>RT4-505H-WH</b>	4' Outer Housing	Matte White
<b>RT8-505H-AL</b>	8' Outer Housing	Satin Aluminum
<b>RT8-505H-WH</b>	8' Outer Housing	Matte White

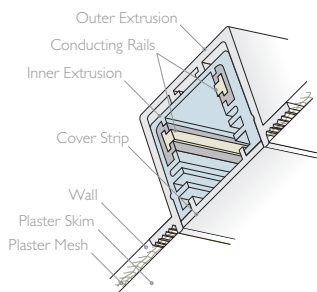
### Fixture System Connectors

Catalog Number	Finish
<b>RT-SC-AL</b>	Satin Aluminum
<b>RT-SC-GB</b>	Gloss Black
<b>RT-SC-PN</b>	Polished Nickel
<b>RT-SC-RB</b>	Rubbed Bronze
<b>RT-SC-WH</b>	Matte White

### Track Components

Catalog Number	Description	Finish
<b>RT-512-AL</b>	Inline Coupler	Satin Aluminum
<b>RT-513-AL</b>	Adjustable Coupler	Satin Aluminum
<b>RT-519-AL</b>	Power Feed	Satin Aluminum
<b>RT-808</b>	Conductor End Cap	Satin Aluminum
<b>RT-809-AL</b>	8' Snap-in Cover (field cuttable)	Satin Aluminum
<b>RT-809-WH</b>	8' Snap-in Cover (field cuttable)	Matte White
<b>RT-810</b>	Conductor Fasteners (10 pack)	Satin Aluminum

cCSAus listed for dry locations only.



**RT-808**  
Conductor End Cap



**RT-513-AL**  
Adjustable Coupler



**RT-809-AL**  
Snap-in Cover



**RT-519-AL**  
Power Feed



**RT-SC-AL**  
Fixture System Connector



**RT-512-AL**  
Inline Coupler



© 2013 Koninklijke Philips N.V. (Royal Philips). All rights reserved.  
Specifications are subject to change without notice.  
[www.philips.com/luminaires](http://www.philips.com/luminaires)

PLTR-0000-BN 04/13

Philips Lighting Company  
200 Franklin Square Drive  
Somerset, NJ 08873  
Phone: 855-486-2216

Philips Lighting Company  
281 Hillmount Road  
Markham ON, Canada L6C 2S3  
Phone: 800-668-9008